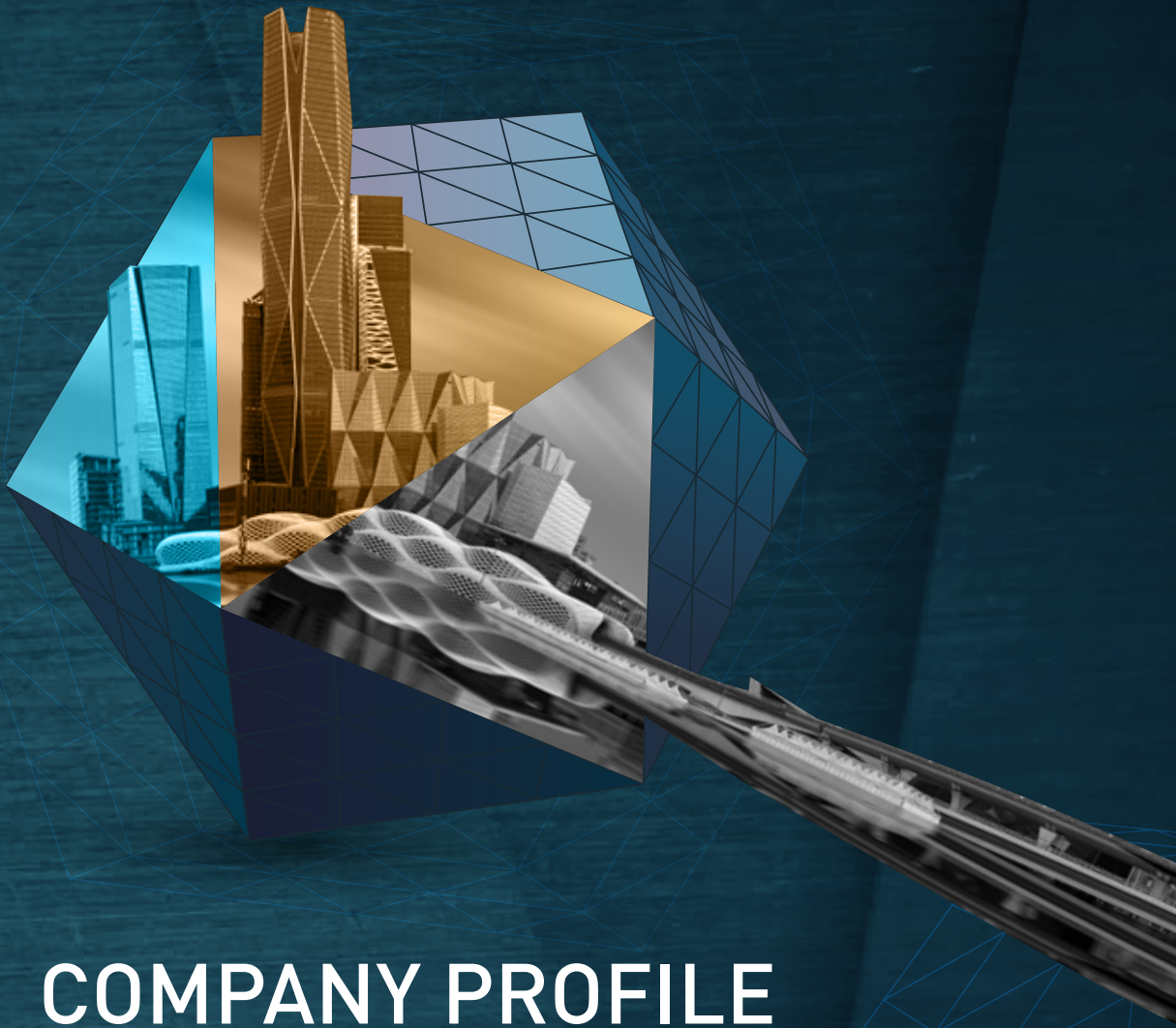


Flow More Trading Est. مؤسسة تدفق أكثر التجارة



COMPANY PROFILE

YEAR 2024

About Flow More

Flow More (Manufacturing, Trading & Servicing) is established to provide the clients, the consultants and the contractors for Electro-Mechanical product supplies, manufacturing of engineered products and also offering the service after sales for the certain range of products.

Flow More Strength lies in being construction & industrial field of Electro-Mechanical product solutions to the prestigious Saudi projects, which can deliver the complete Plumbing, HVAC and Firefighting Products and also been manufacture the locally make Saudi engineered products as its encouraged by the Saudi Government Authorities to build the nation with development and innovative technology.

We have also been sourced the reputed international manufacturer products with best quality, design and compliance to the appropriate international and Saudi standard requirements to meet the project specifications.

Flow More has a team of qualified, well experienced technical and sales staff, capable of providing required technical assistance and economical solutions and offer the best after-sales services.



Vision

We want to build our clients with the best solution provider in terms of quality, service & cost effectiveness in order to meet the customer needs of every single product to fulfill techno-commercially. We focus on the **Saudi Vision 2030** to achieve in the better and economical way of sustainable and creative ideas of modern technology with improved local market developments.

Mission

To achieve total customer satisfaction by providing sincere and continuous services to their focused needs, to develop and maintain the customer friendly solutions and to be a trust worthy business partner for mutual growth.



Why Flow More Engineering

Flow More Engineering delivers the distinguished turnkey solutions, specialized for the following divisions:

Fabrication

Engineered & Technical Products for all kinds of steel, plastic and fiber materials for building construction & Industrial projects.

Trading

Plumbing Specialities, HVAC & Firefighting Products

Services

Procurement & Sourcing of International products, Installation, Testing & Commissioning supports and Maintenance **(AMC Contract)**.





Fabrication
Fabrication
Fabrication
Fabrication
Fabrication
Fabrication



FME Fabricated Steel Interceptors

Flow More Engineering (FME) is fabricated the range of steel interceptors that are in compliance to the ASME, PDI and International standards.

Regularly furnished:

Steel Acid Resistant Epoxy Coated interior and exterior, internal air relief by-pass, removable pressure equalizing/flow diffusing inlet baffle, fixed bottom outlet baffle, single or double wall deep seal trap, gasketed non-skid secured cover complete with center tie down assembly, internal / external vented flow control fitting.

FME do manufacture the Stainless Steel SS304 /SS316L interceptors' construction upon the client requirements.

Inlet/Outlet Variations:

No Hub / Female Threaded / Flanged

Options:

- Lift out sediment bucket
- High Level Alarm with BMS Compatibility
- Enzyme Dosing System for Grease Interceptors
- Heavy Duty Reinforced Cover(s)
- Sight Glass Window
- Fixed Bolt on Extensions



Grease Interceptor



Sand / Sediment Interceptor



Oil Interceptor



Lint Interceptor



Solid Interceptor



Hair Interceptor

For the selection and sizing of the flow rates and custom sizes, please contact FME.



Linear Trench Drain Systems

FME specialized is in the manufacturing of linear trench drain systems in accordance with the international DIN/ASTM standards and different loading classes to meet the project design/specification's.

FME offers a wide range of the Stainless steel and HDG /Coated Steel trench drain systems with the range of products as follows:

- 304/316 Stainless Steel Channel Drains
- 304/316 Stainless Steel Shower Drains
- 304/316 Stainless Steel Gratings and Angle Frames
- 304/316 Stainless Steel Linear Slot Drains
- 304/316 Stainless Steel Floor Drain & Cleanout covers.
- Powder Epoxy coated Steel Gratings with HDG Steel Body
- HDG Steel Gratings with Angle Frame

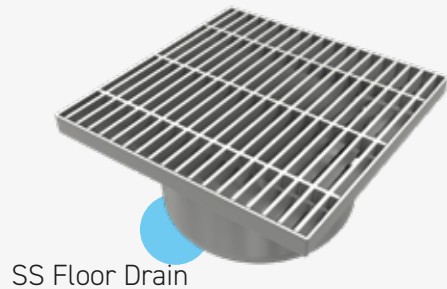
Various Loading classes are available from the light duty to extra heavy duty (Class A to Class E).

FME SS linear drain products are widely used in the Kitchens, Toilets, Laundries, swimming pool & Ablution areas, Food processing industries and Steel products in Parking areas, Storm water Drainage & Mechanical rooms.

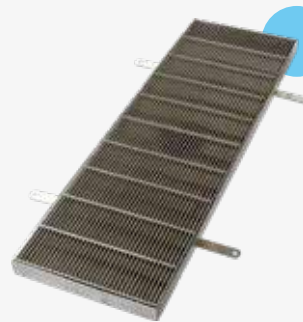
FME do fabricate the customized linear drainage products as per the client requirements.



SS Trench Drain



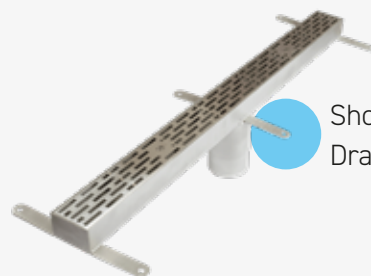
SS Floor Drain



SS Grate & Angle Frame



SS Slot Drain



Shower Drain Channel



SS Tile Insert Floor Drain

For SS channel Patterns, Grating type, Finish and Sizes, please contact FME.



Fabricated General Storage Tanks (Low Pressure)

FME offers a different type of the storage tanks to be fabricated in Carbon steel and stainless steel (SS304 & SS316L) and these tanks may be employed for general storage purposes under typically non-pressurized conditions (Atmospheric Tanks).

The above ground tanks are fabricated in the carbon steel and stainless-steel and are designed in the following configurations:

- Flat Bottomed/cone storage vessels
- Standard water storage tanks
- Rectangular tanks with legs
- Bins & Hoppers
- Other unique storage tank variations

FME will provide a unique variation as per the international standards and non-code vessels to suit the client specific application requirements. Storage vessels may be shop fabricated or constructed on site, depending on the project needs and scope.



For the selection and sizing of the flow rates and custom sizes, please contact FME.



Fabricated Manholes, Access Doors, and Vent Grills

FME do manufacture and supply the fabricated metal floor access covers, vent grills and hatches. FME will provide the professionals within the building services sector with an innovative, practical solution to resolve the problem of accessibility to concealed under-floor services - quickly, safely and cost effectively.

We offer the following building access products:

- Steel / Stainless Steel / Aluminum Recessed Manhole.
- HGD / Stainless Steel Access Doors.
- HDG / Stainless Steel Vent Grills.
- HDG Checkered Plate covers with angle Frame.
- Stainless Steel Hatches.

Different loading classes are available from light duty to extra heavy duty.

Our building access products are widely used in shopping malls, commercial complexes, residential units, and food processing factories.

Recessed
Manhole cover



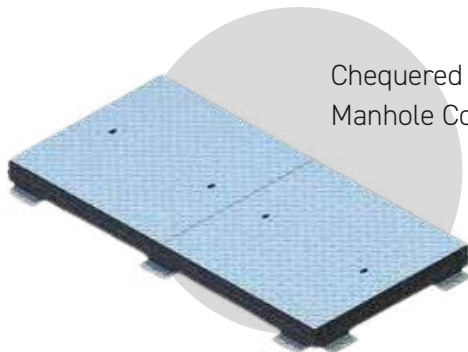
Access
Hatch



Access
Door



Chequered
Manhole Cover



Vent Grill



Manhole covers and access doors are usually manufactured in the standard sizes. Custom make sizes also available upon the request. Please contact FME.





Anti-vortex Plates and Spools

FME can be manufactured the high quality of anti-vortex plates and precisely design the equipment through the latest measuring techniques. We can do customize the anti-vortex plates according to our clients' required specifications.

All parts are to be Stainless Steel grade of SS304 & SS316L that makes the product durable for a long time.

We also manufacture the optional material construction of the HDG anti vortex plates upon the client request.

All the anti-vortex plates are to be manufactured in appropriate to the equivalent NFPA standards.

Also we can do the prefabricated optimum quality Carbon Steel and alloy Piping Spools. Pipe spools are the pre-build parts of a piping system.

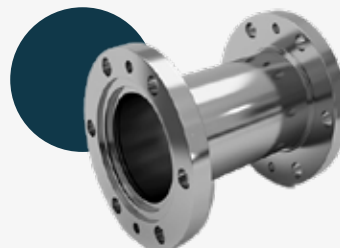
Pipes, flanges, and fittings are in accordance to all international standards.



HDG Antivortex
Plate



Epoxy
Coated Spool



SS Spool



SS Antivortex
Plate

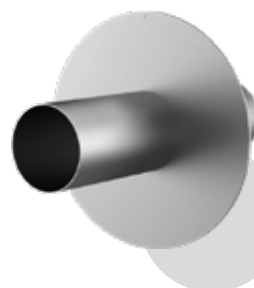
For your desired product requirements, please contact FME.

Puddle Flanges and Goose Neck Air Vent

FME will manufacture the high quality of HDG puddle flanges, puddle sleeves and goose neck air vents to make sure your plumbing needs are more efficient and robust. We make the puddle flanges and air vents in an unlimited variety of sizes as per the client requirements and project specifications. and also FME can fabricate the stainless steel SS304 and SS316L puddle flanges up on request.



HDG Puddle
Flanges



SS Puddle
Sleeve



HDG Goose-Neck
Air Vent

For the selection and sizing of the flow rates and custom sizes, please contact FME.





Steel Ladders

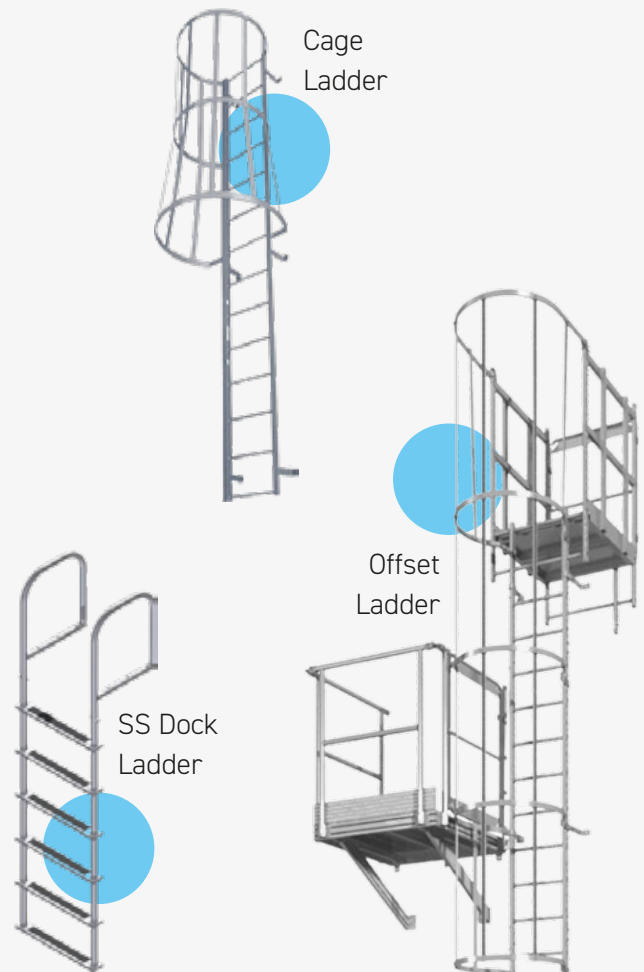
FME steel ladders are designed for use where safe, solid vertical climbing access is required. Ladders are available with and without walk thru handrails at the top landing surface. All FME ladders meet applicable OSHA and ANSI standards.

FME can fabricate the HDG and power coated ladder with the following variations.

- Standard Fixed ladders,
- Ladder with manhole cage (Welded cage or bolt-on safety cage),
- Safety rolling ladder,
- Offset stair ladder.

FME can manufacture stainless steel ladder upon request.

Shall be regularly finished with the gray powder coated and safety yellow color for hazardous area.



For the ladder type, material and powder coating and RAL color options, please do contact FME.

Decorative Steet Pole

FME would manufacture the complete outdoor lighting units for your streetscapes, parking lots, community areas and parks. These light poles and bollards are available in sleek modern designs or styles that provide an antique aesthetic.

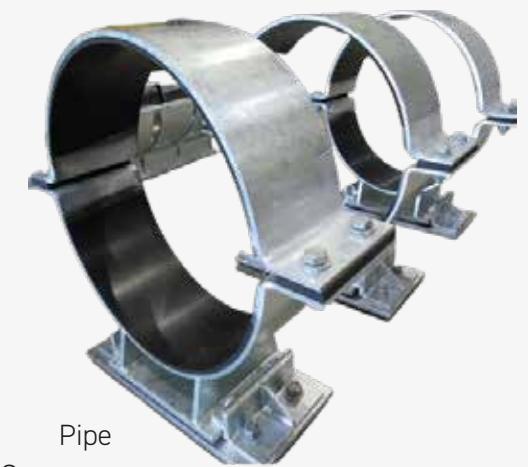




General Fabricated Products



Storage
Cage



Pipe
Supports



Unloading
Ramp



Waste
Skip

The background is a photograph of an industrial facility, likely a refinery or chemical plant, featuring a complex network of pipes, valves, and machinery. The entire image is overlaid with a semi-transparent blue filter. Several large, bright yellow handwheels for valves are prominent on the left side. The word "Trading" is repeated five times in a thin, white, sans-serif font, stacked vertically in the center. The final word, "Trading", is significantly larger and rendered in a bold, white, sans-serif font at the bottom of the stack.

Trading
Trading
Trading
Trading
Trading



Plumbing & Drainage Specialities

Flow More Engineering will supply the Plumbing & Drainage Specialty Products of reputed International Manufacturers are compliance with the following codes of UPC/IPC & ANSI/ASME, EN 1433, ASSE 1044 & PDI Standards:

Cast Iron Floor Drain with Square and Round Strainers,

Cast Iron Floor Cleanout with Square and Round combined Plug & Cover, & Ceiling Cleanout Plug,

Cast Iron Parking/Area Drain with Square and Round Grate W/Sediment Bucket,

Cast Iron Trench Drain System with Heavy Duty Grates,

Cast Iron Catch Basin and Floor Gully,

Cast Iron Roof Drain, Scupper Drain & Vent Cap

Cast Stainless Steel/Nickel Bronze Downspout Nozzle.



Polymer Concrete Trench Drain Systems

Wide range of Polymer Concrete Channels and Grates,

Loading Class available from A15 to F900.

Different Sizes and Materials are available,

Sloped and Non-Sloped Channels,

Side End Caps and Side/Bottom Outlet Options.

Optional Catch Basins are available.



Polymer Concrete Trench Drains

Copper & Stainless Steel Piston Type Water Hammer Arrester,

Stainless Steel Bellows Type Water Hammer Arrester,

Brass/Bronze Hose Bibb W/Vacuum Breaker,

Brass Pressure Drop Activated Trap Seal Primer with Multi Ports Accessories to Serve More than One Drain

Electronic Type Trap Seal Primer W/35 Outlet Ports to serve Multiple Number of Drains.



WHA-CPR



WHA-SS



HB/VB



TSP-PD



PORTS



TSP-ELECTRONIC





Automatic Grease Interceptors (Plastic & SS)

Flow More Engineering will supply the HDPE/GRP and Stainless Steel Automatic Grease Interceptor Products of professional in the field of Manufacture the Interceptors and are compliance with the following codes of EN1825-1 Standard:

HDPE Grease Separators: Free standing with Automatic disposal system,

HDPE Grease Separators: Free standing with base model.

Stainless Steel Grease Interceptor with Automatic Grease Recovery Units

Grease Trap and Grease Removal Unit for steam oven and Single bowl sink applications



Underground GRP/HDPE Grease Interceptor

Automatic Type Free Standing GRP/HDPE Grease Interceptor



Stainless Steel Centralised Grease Trap and Grease Removal Unit

Stainless Steel Grease Trap and Grease Removal Unit



BS EN 1825



HDPE Oil/Water Separator

Flow More Engineering will supply the HDPE Oil/Water Separator of reputed International Manufacturers are compliance with the following codes of EN858-1 Standard & CE marked:

HDPE Oil/Water Separators with Coalescing pack for Parking Areas Car Wash & Petrol Stations as it's required for Class 1 (Full Retention)

HDPE Oil/Water Separators without Coalescing pack for Parking Areas Car Wash & Petrol Stations as it's not required for full retention.



BS EN 1825-1

EN 858-2



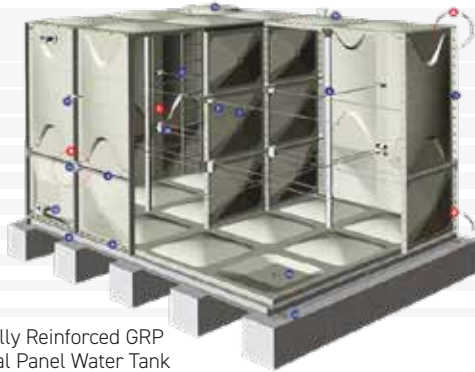


GRP Sectional Panel Water Storage Tank

Flow More Engineering will supply the GRP Sectional Panel Water Tank of Leading International Manufacturer and are compliance with the following codes of ISO, WRAS, NSF, PSB and SIRIM QAS:

GRP Sectional Panel Water Tank with Internally & Externally Reinforced System and Partitional Wall Tanks,

The Panels are made from Insulated and Non-Insulated Wall, Roof and Bottom and also the wide range of capacities different sizes (LXWXH).



Internally Reinforced GRP Sectional Panel Water Tank



Externally Reinforced GRP Sectional Panel Water Tank



FRP Underground/Above Ground Cylindrical Water Storage & Sewage Tanks

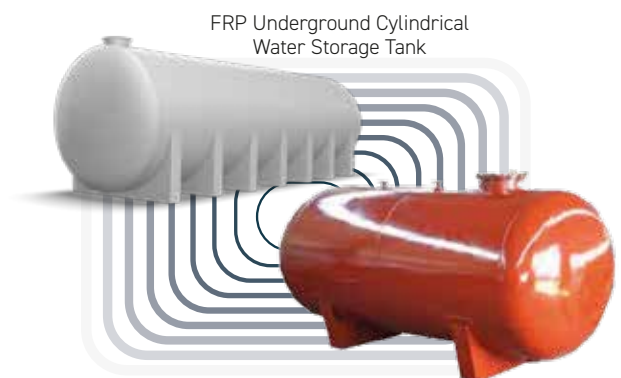
Flow More Engineering will supply the FRP Underground/Above ground Water Storage & Sewage Tanks of reputed Local Vendor Manufacturers are compliance with the following codes of WRAS Standard:

FRP Cylindrical Water Storage Tanks with Capacity of up to 40000 US Gallons Capacity,

Tanks are to be manufactured as both Horizontal and Vertical Shape,

Different thickness of insulation (Rigid Closed Cell Polyurethane (PUR)) as available as 25, 40 & 50 mm

FRP Chemical Storage and Sewage Holding Tanks also available as per the site requirements.



FRP Underground Cylindrical Water Storage Tank

FRP Underground Cylindrical Chemical Storage Tank





Cast Iron Y & Basket Type Strainers & Suction Diffuser

Flow More Engineering will supply the Y and Basket Strainers of Experienced in the Field of Manufacturing the Strainers and Diffuser and are compliance with the following codes of ISO Standards:

Cast Iron Y Type Strainer (Up to 600 mm Size),

Cast Iron Basket Type Strainer (Up to 800 mm Size),

Cast Iron Suction Diffuser,

Optional Materials are available upon request,

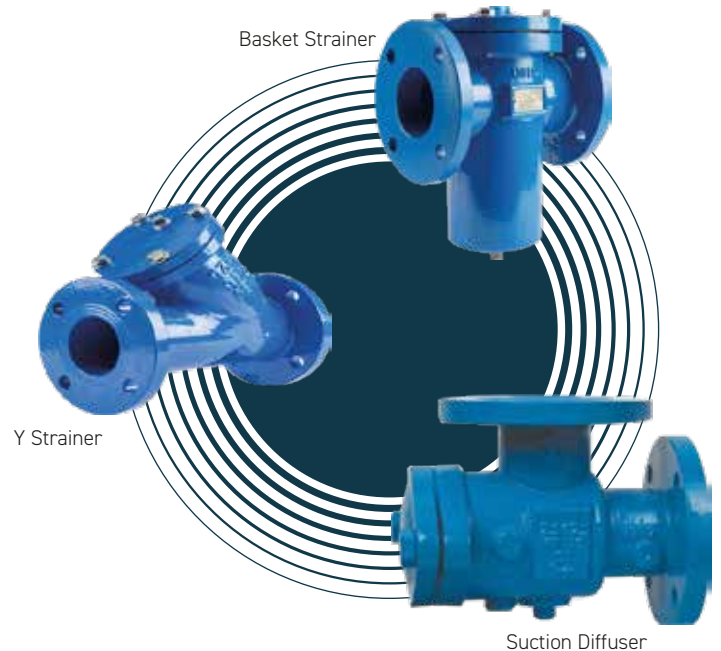
SS 304 & SS 316 Screens and Basket Filter,

Pressure Ratings are ANSI 125-600#,

Threaded, Socket Weld & Flanged End Connections,

WRAS Approved FBE Coating (Potable Water Application),

Custom Options are available upon request.



Anti Vibration Control Products

Flow More Engineering will supply the Anti-Vibration Products of Specialized in designing and manufacturing high technology anti-vibration systems and are compliance with the following codes of ISO Standards:

Mechanical, Building & Sound Vibration Isolators:

Rubber, Spring & Special Hangers
(Anti-Vibration and Sound Insulation Suspension for Gypsum Board Ceilings),

Rubber, Spring & Special Mounts
(Anti-Vibration Rubber Pads and Anti-Vibration Spring Isolators (Multi-Springs, Lateral Restraints and Heavy Duty Spring Mounts)),

Multiform Anti-vibration Suspension

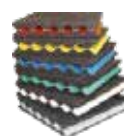


Anti-Vibration Spring Isolator with Lateral Restrain

Suspension of sound insulation gypsum board ceilings



Floating Floor Supports



Anti-vibration Ceiling Hanger

Vibration ceiling hangers



Multiform Anti-vibration Suspension





Flexible Connectors, Expansion Joints & Dismantling Joints

Flow More Engineering will supply the Vibration Products of Specialized in designing and manufacturing high technology anti-vibration systems and are compliance with the following codes of ISO, CE & FM Standards:

Flexible Connectors (Metal Hose and Braiding),
Fan Coil Hose (Without Braiding - With Insulation),
Fire-Fighting Hose with U and V Flex,
Threaded, Flanged & Grooved End Connections,
Various Working Pressure and Temperatures



Metal Flexible Hose with Braiding



Fan Coil Hose



V Flex (Fire Fighting)

Double Sphere Rubber Expansion Joint
Screwed,
Rubber Expansion Joints (Single & Double
Sphere),
Rectangular Expansion Joints,



Double Sphere Rubber Expansion Joint Screwed

Stainless Steel Axial Expansion Joints (Fixed &
Floating),
External Pressurized Expansion Joint,
Gimbal Expansion Joint,



Rubber Expansion Joint
Carbon Steel Flanged

Flexible Connector for Pump Connections,
Flanged, Grooved & Butt Welded Connections,
Various Working Pressure and Temperatures



External Pressurized Expansion Joint - Flanged

FM Approved Gimbal Expansion Joint Flanged



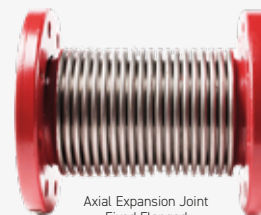
Dismantling Joint



Flexible Connector For
Pump Connections



Rectangular Expansion Joints



Axial Expansion Joint
Fixed Flanged



Axial Expansion Joint
Floating Flanged





General Duty Valves

Flow More Engineering will supply the General Duty Valve Products of reputed International Manufacturers and are compliance with the following standards of ISO & WRAS Approvals:

Gate Valves (Brass, Bronze Threaded ends & C.I, D.I Flanged Ends),

Globe Valves (Brass, Bronze Threaded ends & C.I, D.I Flanged Ends),

Ball Valves (Brass, Bronze Threaded ends & C.I, D.I Flanged Ends),

Check Valves (Brass, Bronze Threaded ends & C.I, D.I Flanged Ends),

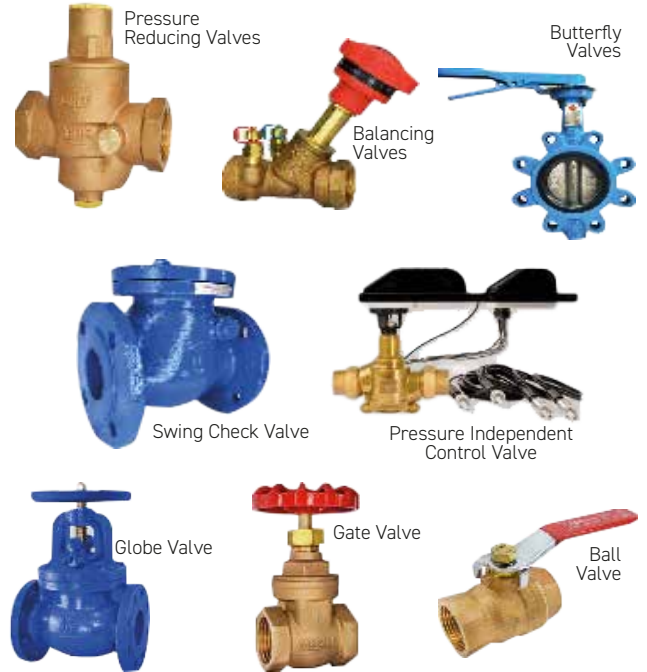
Y Strainers (Brass, Bronze Threaded ends & C.I, D.I Flanged Ends),

Butterfly Valves (C.I & D.I Wafer/Lugged/Double Flanged Ends),

Balancing Valves (DZR Brass, Bronze Threaded ends & C.I, D.I Flanged Ends),

Bronze Iron Pressure Independent Control Valve & Pressure Reducing Valves and SS Metering Station,

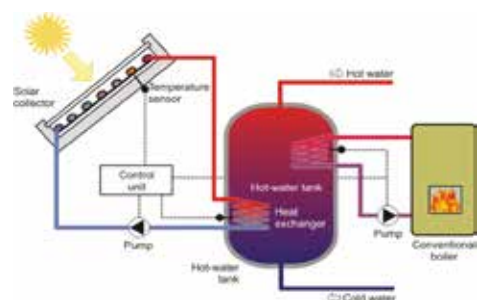
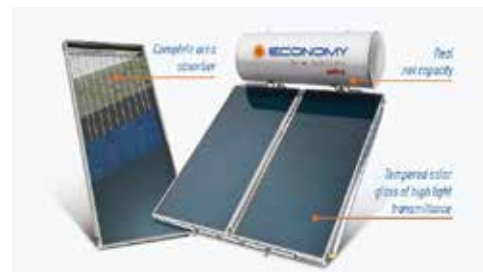
Automatic Air Vents etc.....



Solar Water Heaters

Flow More Engineering will supply the Solar Water Heater Products of experienced International Manufacturers and are compliance with the following standards of ISO & Solar Keymark and CE Approvals:

Thermo-siphon (Gravity) type Solar Water Heaters with single or multi solar collector panels and the boiler tanks, Different types of materials in collector profile, Wide range of Heating Element Capacities, Installation on the roof with Horizontal/Inclined Position, Forced Circulation (Centralized) System with one, two or without heat exchanger serve numerous applications, Large capacity of water volume storage (Up to 2,000 Liters), Most suitable to be used for commercial and the public buildings





Cast/Ductile Iron Manhole Covers/Gratings

Flow More Engineering will supply the Cast/Ductile Iron Manhole Cover and Gratings and are compliance with the following standards of ISO and BS EN:

Cast/Ductile Iron Manhole Covers and Gratings,
Various shapes like Round, Square and Rectangular,
Mechanical and Electrical Applications,
Wide range of Load Classes from Light duty to Extra HD.



Recessed Manhole Cover



Trench/Catch Basin Grating



Square Manhole Cover



Round Manhole Cover

Packaged Pressurization Units & Expansion Tanks

Flow More Engineering will supply the Package Pressurisation Units and Expansion Tank Products of most experienced in the field Industry and are compliance with the following standards of ISO & WRAS and CE Approvals:

Package Pressurisation Units for the sealed cooling and heating Water systems with the Air and Dirt Separators, With a range of expansion vessels, spillback tanks and vacuum degassing options, Fully programmable set of functions to ensure the safe system operation,

Commercial, Industrial and Residential Applications, Pressure Vessels for potable water supply systems, fire extinguishing systems, pressure booster systems, pressurisation sealed expansion systems, sprinkler systems, water shock arrestors, Expansion vessels are designed with replaceable Diaphragm.





GRP/FRP Manhole Covers / Gratings / Ladders

Flow More Engineering will supply the GRP/FRP Ladder and Grating Systems with the International OSHA and EN Standards:

GRP/FRP Pultruded Ladders are Manufactured with isophthalic / Vinyl ester resin pultruded profiles,

Ladders are Custom made with safety cage option use where safe vertical climbing access is required,

Fiberglass Reinforced Plastic (FRP) Ladders and Safety Cages are Design, accordance with OSHA standards, Section 1910.27,

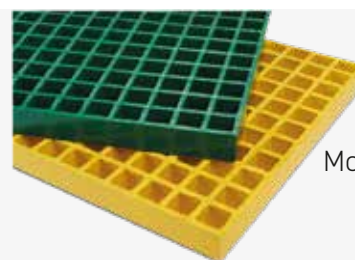
Pultruded gratings are made by assembling the FRP pultrusions which are manufactured with a high percentage of glass fiber roving soaked with resin and finally designed to desired shapes by heating and pultrusion,

Pultruded gratings are well suited for highly corrosive environments and offers very high load bearing capacity,

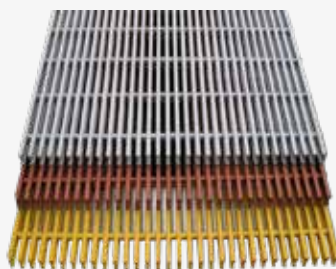
Molded Fiberglass Gratings are used for their high strength, corrosion resistance, light weight, long life and safety,

Design, Fabrication of advanced Fibreglass Reinforced Plastic (FRP/GRP) Structural,

Covers are available with many options like open type, closed type & hatch type etc., inorder to cover the larger openings Ferrotech will design, fabricate and supply Covers with intermediate FRP beams, suitable for carrying 3KN,5KN -10KN, special covers are available to with stand heavy load based on client custom made requirement.



GRP/FRP
Molded Gratings



GRP/FRP
Pultruded Gratings



GRP/FRP
Access Cover



Services
Services
Services
Services
Services
Services



Installation, Cleaning & Leak Rectification of The GRP Tanks

Flow More Engineering will rectify any kind of water leakage or any cracks on the surface of the panel water tanks. With the number of years our technical team has been specializing in installing, refurbishing/replacing, cleaning of sectional water storage GRP tanks will be done smoothly having minimal disruption to water supply. Our only aim is to making the customers satisfactions with the service that we are offering.





Annual Maintenance Contract of Grease Interceptor Cleaning

Flow more Engineering offers the AMC for the grease interceptors cleaning and maintenance services in the Kingdom of Saudi Arabia.

FME's grease interceptor cleaning service includes:

One-off cleaning,

Emergency call out grease interceptor cleaning,

Periodic cleaning services of grease interceptor under an annual maintenance contract (AMC).

FME not only offers grease interceptor cleaning, but also installation of grease interceptors, installation of dosing system, relocation of grease traps, gasket replacements. Knowing the size of grease trap is the first step in determining the frequency of grease trap cleaning which is the basis for preparing an annual maintenance contract. As a professional grease interceptor service provider will gather all other necessary information to send the best proposal and plan the cleaning schedule and equipment. We work with our customers to provide grease trap cleaning service on their preferred days and time for a convenient, hassle free grease trap cleaning service.





Supply And Installation Of HVAC & Fire Fighting Equipments

Flow More Engineering is dedicated to providing the highest quality service available within its specialist divisions HVAC and Fire Fighting. The principal activities of FME are to supply, and install complex Airconditioning, Ventilation, Fire-fighting equipment's for residential, commercial & industrial buildings which include office towers, hotels, government buildings, factories, etc.

We have experienced Engineers & technicians, well equipped with tools and machinery to do quality work.





Site Fabrication Works

Flow more engineering help to minimize any time lost by providing a wide range of mobile steel fabrication and welding services at sites.

Our mobile welding services can be undertaken anywhere on your site and are often requested to fix issues with steel frame buildings to minimize construction delays. Our mobile welders have years of experience and have a deep understanding of how to work with a range of metals to create the best end result for you and your project.





FLOW MORE
We Simplify Technology

Flow More Trading Est. مؤسسة تدفق أكثر التجارة

2550, Ahmed Al-Arini, 7974, Riyadh 14321 - Kingdom of Saudi Arabia, Tel: 011-2862993 - CR No: 1009058300

Email: inquiry@flowmoreengineering.co Website: www.flowmoreengineering.co